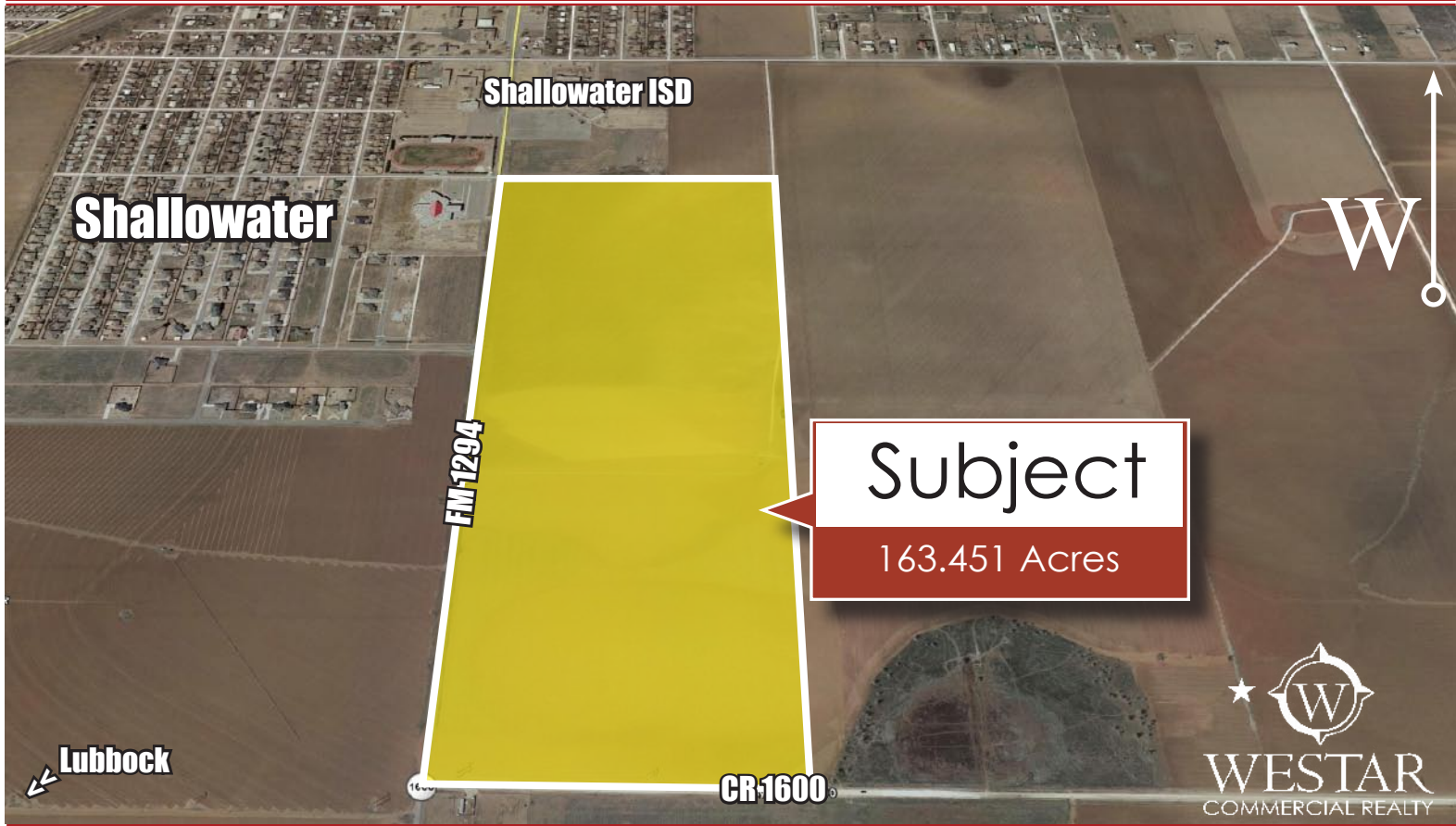


163.451 Acres Available

FM 1294 - Shallowater, Tx



Total Land Area: 163.451 AC
Land Dimensions: 4059.11' x 1756.98'
Price: \$3,500/AC
Zoning: See Plat
ProRatas Paid: No
Utilities to Site: Yes

\$3,500/AC

Comments:

- Three Shallowater Schools Immediately West
- Research and Development Plat In Place
- Several Prospects Interested In Leasing a Proposed Center on Site
- UMC Clinic to be Built Across the Street in Winter of 2008

806 797 3231

lubbockwestar.com

4415 71st, Suite 12
Lubbock, TX 79424
806 797-3231 (Office)
806 793-2130 (Fax)

The Westar Team

Bill Young, Principal Broker
Barry Comiskey, CCIM
Kevin Watt

Cindy Snell
Donna Currey Barnes, GRI, CLA
Cliff Watt, CCIM

David Powell
Rob Campbell
Allan Rosen

John Owens
Burl Greaves
Blake Truett
David Pearson

PRELIMINARY PLAT LOTS 1-294, WIMBERLY FARM

AN ADDITION TO THE CITY OF SHALLOWATER,
LUBBOCK COUNTY, TEXAS



Not to Scale

