



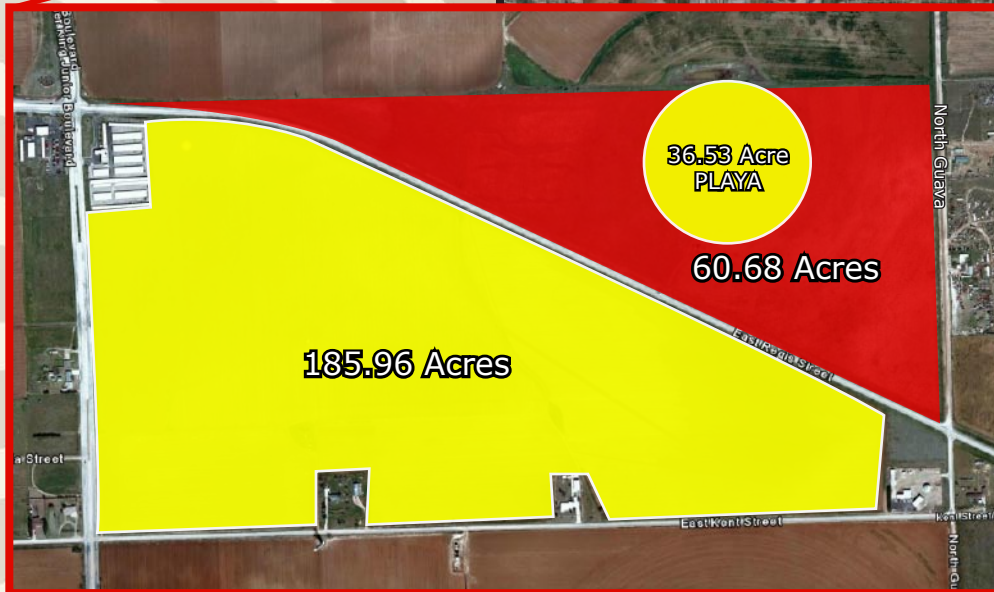
WESTAR
 COMMERCIAL REALTY
 806 797-3231
 www.westarrealty.com

REGIS PARK



Subject

MLK Blvd. & Regis Ave.



- Preston Smith International Airport
- Lubbock Country Club
- Lubbock County Jail

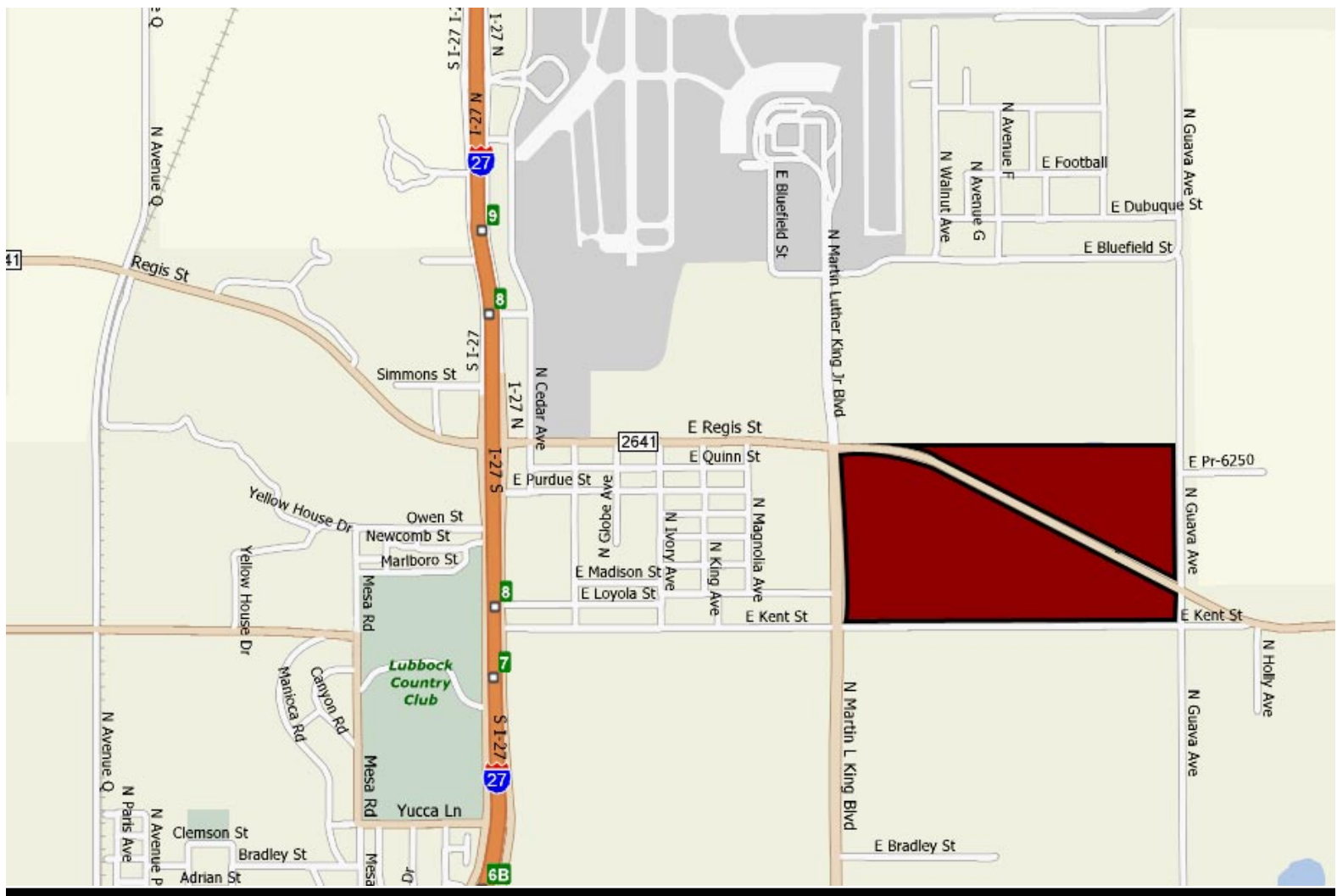
Total Land Area: 283.17 Acres
 Price: See Agent For Details
 Zoning: IDP (Industrial Park)
 Pro Ratas Paid: No
 Utilities to Site: Septic use, Electric
 (Water Line on N. MLK / 30" Water Line on N. Guava Ave)

Price:
SEE AGENT

- Property Description:
- land is currently taxed as Ag Use
 - Property will be replatted and designed for an Industrial Park with R-1 and C-4 use as well.
 - Close proximity to Preston Smith International Airport, the New Lubbock County Jail, and the LEDA development (Future 80 Million Dollar Development)
 - Property has three wells to be used for landscape irrigation.
 - Preliminary plat to be completed soon. (concept IV on back)

The Westar Team

Bill Young, Pricipal Broker	Cindy Snell	David Powell	4415 71st, Suite 12
Barry Comiskey, CCIM	Donna Barnes GRI, CLA	John Owens	Lubbock, TX 79424
Kevin Watt	Cliff Watt, CCIM	Burl Greaves	806 797-3231 (Office)
	Alan Rosen	Blake Truett	806 793-2130 (Fax)



Regis Park Concept IV

