

**FOR SALE
COMMERCIAL/INDUSTRIAL LAND
I-27 & South Loop 289
Lubbock, TX**

Gordon Wilkerson
806-474-2207 (office)
806-441-4307 (mobile)
806-474-2216 (fax)



Unit Size: 70.046 Acres

Sale Price: Call For Pricing

- Zoning:**
- IHC
- Boundaries:**
- North: 66th
 - East: Ash
 - South: Loop 289
 - West: Interstate 27
- Description:**
- Outstanding commercial/industrial tract at the corner of South Loop 289 and I-27
 - Excellent site for hotel, truck stop, restaurant, distribution center or other use

Commercial & Industrial Construction, Development, Management & Brokerage

Gordon Wilkerson
Mobile: 806-441-4307
Home: 806-794-7640
gwilk@wilkersonstorage.com

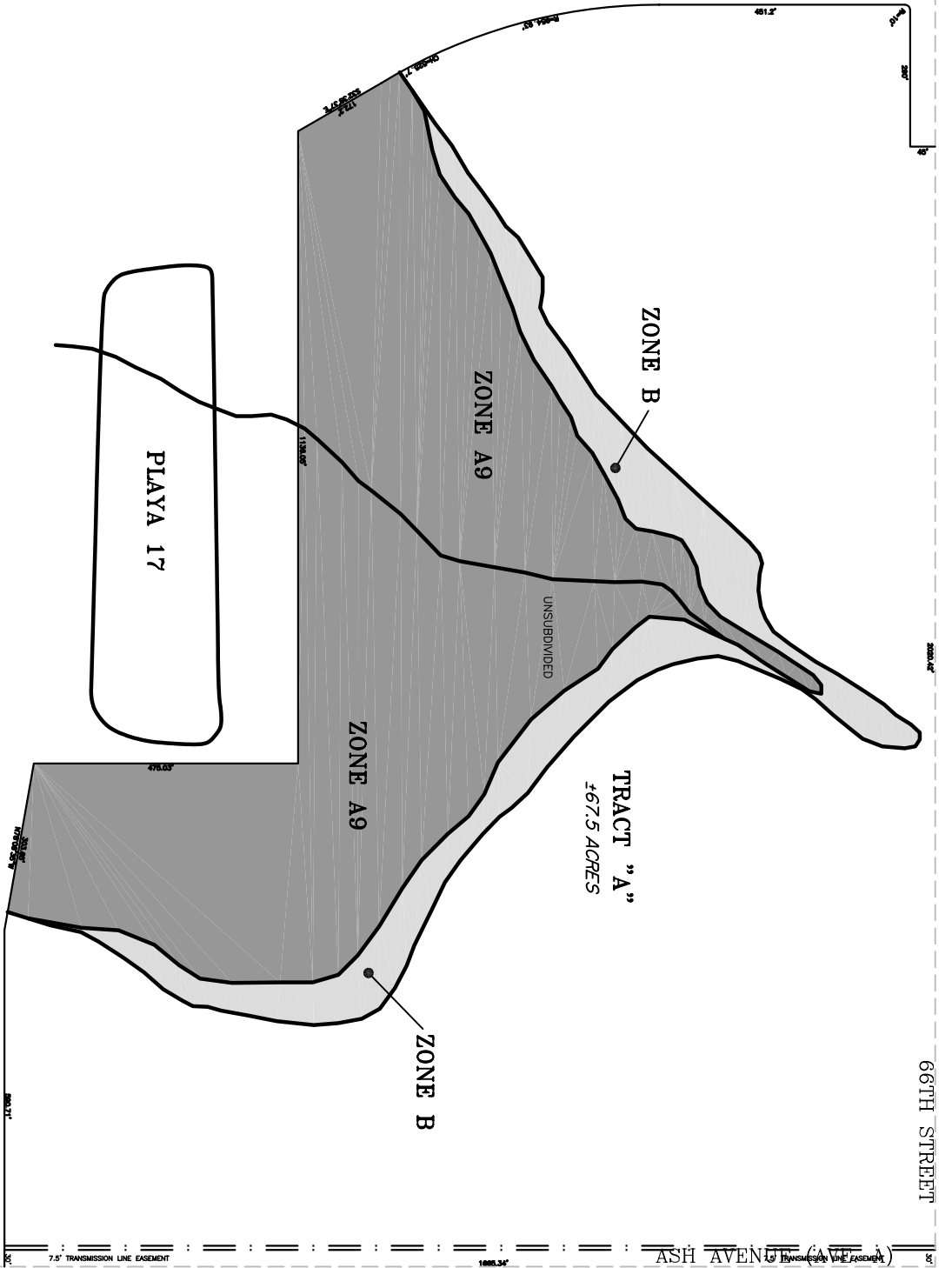
David Wilkerson
Mobile: 806-441-2200
Home: 806-785-2087
davewilk@wilkersonproperties.com

www.wilkersonproperties.com

Any information given herewith is obtained from sources we consider reliable. However, we are not responsible for misstatement of facts, errors, omissions, prior sale, withdrawal from market, modification of mortgage commitment, terms and conditions or change in price without notice. The information supplied herein is for informational purposes only and shall not constitute a warranty or assurance that said information is correct. Any person intending to rely upon the information supplied herein should verify said information independently.

U.S. HIGHWAY 87

INTERSTATE HIGHWAY 27



SITE PLAN

SCALE : 1" = 300'

Wilkerson
 PROPERTIES INC.

Commercial & Industrial
 Development, Management & Brokerage
 Phone: (806) 474-2223
 Fax: (806) 474-2216
 501 E. 66th Street
 Lubbock, Texas 79404

1-27 and South Loop 289 Lubbock, Texas	Date: 09/26/2002	Rev:
	Drawn by:	
	Checked by:	
G:\Base Maps\lhm059.dwg, pdf, 09/26/2002 03:53:52 PM		

S1